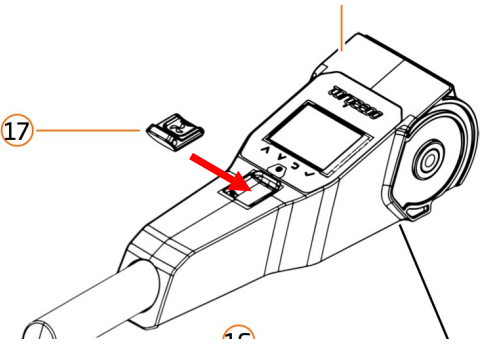
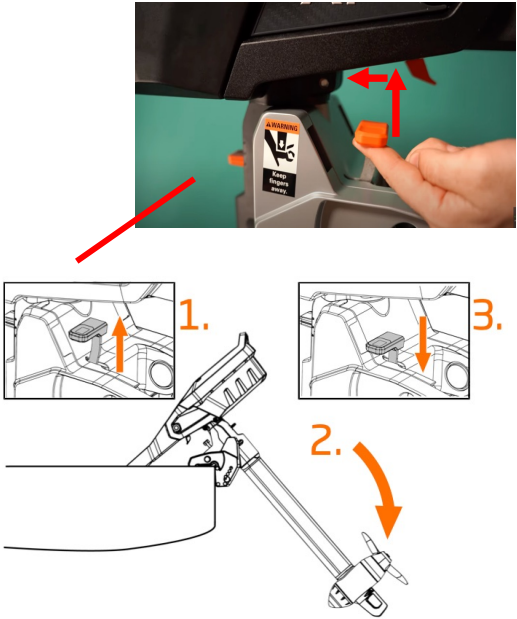


# Manual

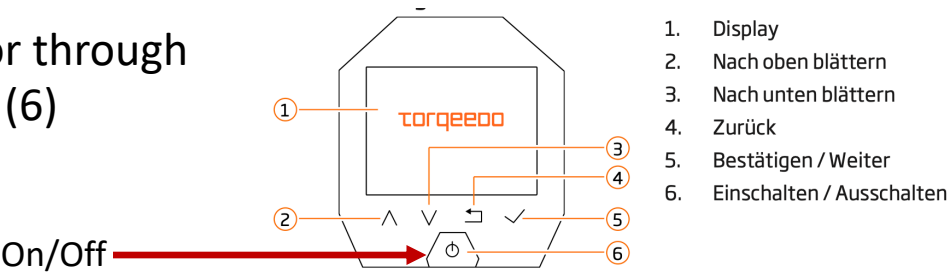
1. Take Magnet-Chip out of the Black Box and put it on the handle (Fix the chip with the string to the motor)



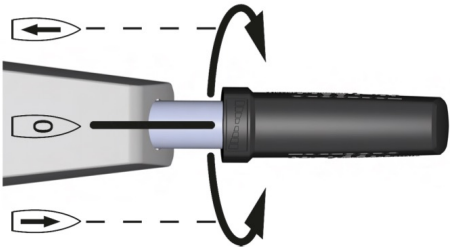
2. Lower the motor into the water through pushing the lever up



3. Turn on motor through pushing On/Off (6)



4. Drive forward – move tiller to right  
Drive backward – move tiller left

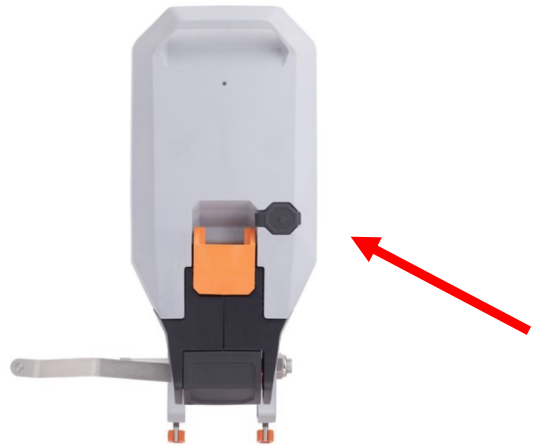


# Solar Panel

Up to 4 Beaufort you can leave everything as it is

---

1. Remove cable from battery and close lid



2. Release the 5 attachments (the 5 elastic cords) and fold solar panel together
- 

3. Store it in the rear box

